

Nepal Visa on Arrival: 2026 Kathmandu Airport Entry Guide

Obtaining a **Nepal Visa on Arrival** is the first step for many travelers landing at **Tribhuvan International Airport (TIA)**. Whether you're visiting for trekking in the Himalayas, cultural exploration, or a stay at a **Kathmandu hotel**, the entry process is designed to be quick and easy. This 2026 guide provides a detailed walkthrough of the **Nepal tourist visa** requirements and **Kathmandu airport arrivals** flow to ensure your journey starts smooth and hassle-free.

Do You Need a Visa to Enter Nepal?

Most foreign nationals require a valid Nepal tourist visa to enter the country. Fortunately, the government provides a convenient Nepal Visa on Arrival facility for citizens of most nations. However, specific Nepal entry requirements apply: citizens of certain countries (including Nigeria, Ghana, Zimbabwe, and Afghanistan) and holders of refugee travel documents must obtain a visa from a Nepalese diplomatic mission prior to arrival. So it's always best to confirm on the Department of Immigration's official website.

If you are eligible for the Nepal Visa on Arrival, there is no need to apply months in advance. You can complete the process directly at Kathmandu's international airport (TIA)



Visa on Arrival - Step-by-Step Process

Step 1: Fill Out the Arrival Form

As you arrive at Tribhuvan International Airport (TIA), follow the signs to the immigration hall. You have two ways to complete your Nepal Visa on Arrival application:

- If you already filled out the online visa form (available on Nepal Immigration's official site), and it's within 15 days of your arrival, you can skip the kiosk (The kiosks are basically machines inside the arrival hall where passengers can fill out their visa request form after landing) and head straight to the payment counter.
- If you didn't complete the online form, use the electronic kiosks in the arrival hall. Enter your passport details, travel information, and personal data to generate your Visa Request Form.
- Take a photo with your mobile or print the receipt form from the



- Take a photo with your mobile or print the receipt form from the kiosk. Make sure to hold onto your form and receipt, since you'll need them for the next part of the process.

Hotel Jampa Tip: Filling the online form before your journey saves your valuable time after a long flight.

Step 2: Pay the Visa Fee

After completing the form, the next step is to visit the payment counter in the arrival area, where visa charges are determined by the duration of your stay:

- 15 days - USD 30
- 30 days - USD 50
- 90 days - USD 125

Payment is usually accepted in cash (USD preferred). Some counters allow card payments, but availability may vary.

Pro Travel Tip: Carry USD in small amounts for a smoother process, as sometimes card machines may not function.

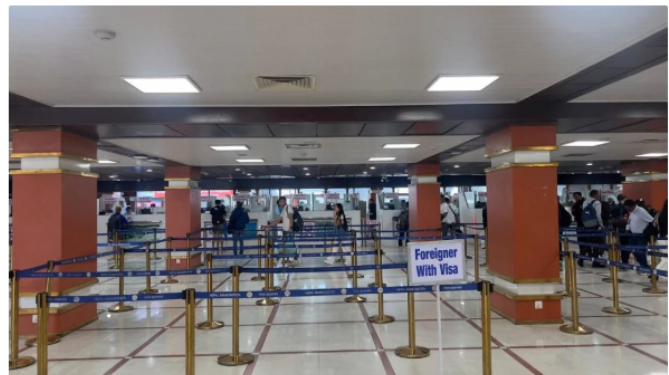


Step 3: Immigration Counter

Now, with your payment receipt and visa form in hand, move to the immigration counter. You'll need to present:

- Your passport (valid for at least 6 months from entry date)
- Printed visa form (or online confirmation)
- Payment receipt

The immigration officer will verify the documents, stamp your visa, and welcome you to Nepal!



After Immigration: What Happens Next?

Once your visa is secured, you'll continue with the airport procedures.

Step 4: Baggage Claim

Proceed to Baggage Claim—Grab a Trolley, Collect Bags, Tags at the Ready

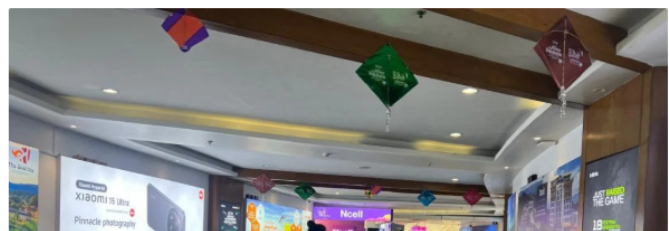
Follow the Baggage Claim signs and take the escalator or lift down to the arrivals hall. Check the overhead screens for your flight number to find the correct carousel, then collect your luggage from the conveyor belt. Oversized or fragile items may be delivered to the special-items counter nearby. Hand trolleys are available free of cost next to the carousels and near the hall entrance.

Hotel Jampa Tip: Keep your baggage tags within easy reach—airport security may match them to your suitcases at the exit. If a bag is missing or damaged, visit your airline's baggage service desk inside the baggage hall before leaving to file a report.



Step 5: Purchase a Local SIM (Optional but Useful)

To stay connected during your trip, you can pick up a SIM card from providers like Ncell or Nepal Telecom, available at counters inside the arrival hall.



To purchase a SIM card, you'll need:

- A copy of your passport
 - A passport-size photo (some counters can take one digitally)
- Once registered, you'll instantly get access to affordable data and call packages.



Step 6: Exit to the Arrival Gate

Take the escalator or lift to the ground floor, where you'll find the guest receiving area. Here, your hotel representative, travel agent, or family may be waiting for you with a signboard.

If you're staying at Hotel Jampa, our airport pickup service ensures a smooth transfer directly to the heart of Thamel, Kathmandu.

Outside the terminal, taxis and private cars are also available, but pre-booking through your hotel is highly recommended for reliability and safety.



Nepal Visa Duration and Extensions

Tourist visas in Nepal are issued for specific durations, usually 15, 30, or 90 days. If you're planning a longer visit, such as for trekking, volunteering, or exploring multiple regions, it's important to know that you can extend your visa after arrival.

Travelers who want to stay beyond the validity of their initial visa can apply for an extension at the Department of Immigration in Kathmandu or at the Immigration Office in Pokhara. The process is straightforward: you'll need your passport, current visa, and the applicable fees.

Visa extension fees depend on the number of extra days you wish to stay; there's typically a daily charge, with a minimum amount applying for short extensions. Extensions allow you to remain in Nepal legally and enjoy your trip without interruptions.

- Extensions cost USD 3 per day.
- A minimum extension fee of USD 30 applies (for up to 15 days).
- The maximum stay allowed on a tourist visa is 150 days per calendar year.

Pro Tip: If you're planning treks or extended stays, arrange your extension early to avoid last-minute hassles.



Important Things to Know About Nepal Visa on Arrival

- Passport Validity - Your passport must be valid for at least 6 months.
- Children - Minors require their own passports and visas.
- Travel Insurance - Strongly recommended, especially if you're trekking in the Himalayas.
- Restricted Nationalities - Citizens of certain countries (e.g., Nigeria, Afghanistan, Zimbabwe) must obtain visas in advance from a Nepali embassy.
- Multiple Entries - Tourist visas are valid for multiple entries within their period of validity.

Tips for a Smooth Arrival at Kathmandu Airport

- Arrive Prepared: Fill out the visa form online before your trip.
- Carry Cash: USD is the easiest currency for payments at the airport.
- Keep Documents Handy: Passport, printed visa form, and payment receipts should be easily accessible.
- Book Airport Pickup: Save time and avoid hassles by arranging a pickup through your hotel.
- Stay Patient: Kathmandu Airport can be busy - queues at immigration are common, especially during trekking seasons.

Why Choose Hotel Jampa for Your Stay?

After your arrival, nothing feels better than a comfortable room, a warm meal, and a relaxing environment. Located in the vibrant neighborhood of Thamel, Kathmandu, Hotel Jampa offers:

- Airport pickup and transfer services
- Spacious, modern rooms with all amenities
- In-house restaurant serving Nepali and international cuisine
- Easy access to cultural landmarks and trekking agencies

Whether you're here for adventure, leisure, or business, Hotel Jampa makes your arrival in Nepal stress-free from the very first step.



Final Thoughts

The Nepal Visa on Arrival process at Kathmandu Airport is simple once you know the steps. With the right preparation - passport, cash for fees, and completed forms you'll be through immigration quickly and ready to start your adventure.

From the moment you land to the moment you step into Thamel, having the right information makes all the difference. And with Hotel Jampa's warm hospitality waiting for you, your journey in Nepal begins smoothly and comfortably.